

Power Quality Tests



What customers say about Livingston

“We use Livingston as it offers us a one-stop shop where we can take care of all our test equipment sourcing requirements.”

THOMAS HARVICK - PROCUREMENT MANAGER

“Livingston’s technical and application support staff are always able to help me with my queries.”

GERARD WHITE - CONTRACT ENGINEER

“I must have different instruments to meet the needs of different assignments. Livingston’s range means I can find exactly what I want and hire it straight away.”

TONGHI-HU - PROJECT MANAGER

Visit us at [Livingston.com](https://www.livingston.com)



Livingston
test equipment rental

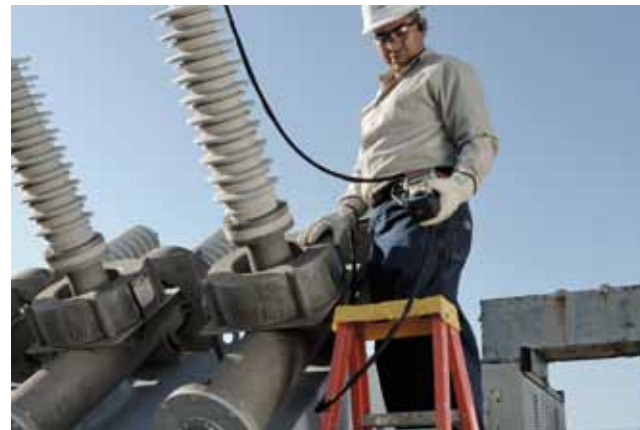
POWER QUALITY TESTS

For Livingston, supplying test and measurement equipment is not just shipping an instrument. It is providing our customer with solutions to their test, measurement and commissioning needs and understanding their needs is at the heart of this.

We understand that the needs of our customers differ both by application and by geography. For this reason, Livingston has kept away from centralized call-centers that lack presence and understanding of local factors, where anonymous operators with no knowledge of your situation, providing standard answers in inflexible solutions.

Through properly executed power quality analysis, sources of energy loss can be located and subsequently eliminated. The effectiveness of each element of a system involved in either the generation or the distribution of electricity (generators, transformers, cabling, switchgear, etc.) can be thoroughly scrutinized using advanced analysis equipment.

This permits power quality problems such as load switching (where the current drawn can result in a drop in voltage level), load imbalances (caused by uneven loading on each phase in the system), harmonic distortions (where non-linear loads lead to overheating of the system), voltage fluctuations, voltage transients, supply interruptions and reactive loads to be uncovered. As well as reducing the size of bills, this activity will help to minimize the level of on-going maintenance work and the period of downtime while repairs are done, as well as avoiding the expense of vital components needing to be replaced.



Livingston stocks power meters, power data loggers/recorders, electrical insulation testers, high end power quality analyzers, plus a wide range of different types and sizes of current clamps. In addition it can give customers highly professional guidance (both technical and application led) in order to achieve the best measurement results.

What engineers can expect from Livingston:

- › Access to latest cable testing technology
- › Optical & electrical cable test solutions
- › Single source for all required test items
- › Selection across a wide price range
- › Professional helpdesk
- › 24 hours delivery time

FLUKE 437 Logging Power Quality Analyser



specifications

Four Voltage and Current Channels
Measurement of dips, swells, interruptions and transients.
400 Hz measurement functions

DRANETZ PX-5 Power Explorer



specifications

4 Voltage and 4 Current Channels
Full Disturbance measurement to IEEE 1159, IEC 61000-4-30 and EN50160 standards
Supplied with Dranview Software

GMC-MAVOWATT 40 Power and disturbance Analyser



specifications

Power and mains disturbance analysis per EN 61000-4-7 and EN50160
Analysis for the direction of the voltage drop, switching tops of the power factor correction and the quality of motors
8 measuring channels: 4 for voltage (differential) and 4 for current (current sensor), for measurements at 50 / 60 Hz power frequency

CHAUVIN ARNOUX 8335 Power Quality Analyser

specifications

4 voltage inputs up to 1,200 V and 4 current inputs up to 6,500 A (depending on sensors)
Electrical safety: IEC 61010 600 V CAT IV / 1,000 V CAT III
Simultaneous real-time display of all 4 inputs is available in graphic, vectorial or value-table format

FLUKE 1735 Power Logger



specifications

Measure maximum power demand over user defined period
Record power and associated parameters for up to 45 days
Supplied with Power Log Software

YOKOGAWA WT-1600 Real-Time precision Power Quality Analyser



specifications

Voltage Input: 1.5 V to 1.000 V and Current Input: 1 A to 50 A
Frequency Range DC, 0.5 Hz to 1 MHz
Basic Accuracy: ±0.1%

Wide range of Test Instruments now available

By using Livingston as supplier for your test and measurement instrument you will have access to a wide range of different instrument. The rental inventory of Livingston contains over 5.000 different instruments over a wide range of technologies. From basic temperature measurement

instrument to very sophisticated high frequency spectrum analysers. Livingston supply all instrument with a complete package of accessories, a manual and a valid calibration certificate. Ready to use.



Check our online catalogue for all available instruments and actual rental prices:
www.livingston.com

Rental, the smartest way to source your equipment:

- › No hidden costs
- › No capital expenditure or investment necessary
- › Cost effective
- › Pay-as-you-go
- › Try before you buy
- › Technology refreshment
- › Lead-time bridging
- › Rental Replacements
- › Avoid disposal costs liabilities

Visit us at www.livingston.com

